

REAL-TIME CRIME CENTER IN THE CLOUD.





WE HAVE ACHIEVED WHAT NOBODY ELSE HAS.

Fusus is the first company to extract and unify live video and data feeds from virtually any source, creating a central hub that enhances the situational awareness and investigative capabilities of law enforcement and public safety agencies.

- **Real-Time Crime Center In The Cloud:** Whether it's a drone, a traffic camera, a private cell phone video, a building security camera, or a bomb disposal robot, fusus can extract the live video feed and send it to your emergency operations center and officers in the field. Our public safety ecosystem combines public & private camera feeds, including internal building cameras into a single real-time feed, enabling Law Enforcement and Public Safety agencies to function with improved operational intelligence.
- **Personnel & Advanced Data Management:** We combine video with CAD feeds, real-time officer geolocator feeds, IoT sensor data, floorplans, and external data feeds, to create a common operating picture that emphasizes officer, citizen & community safety. We give tactical teams and emergency response personnel the edge they need to operate more effectively.
- **Investigations & Evidence Management:** We create a public safety ecosystem that includes a registry map of all the public and private cameras in your region and a multi-media tips line for the public. We feed collected evidence into a cloud-based digital evidence vault for investigators, enabling them to operate more efficiently.



Linked Cameras

13, 166



Population Protected

8.13 million



Locations Connected

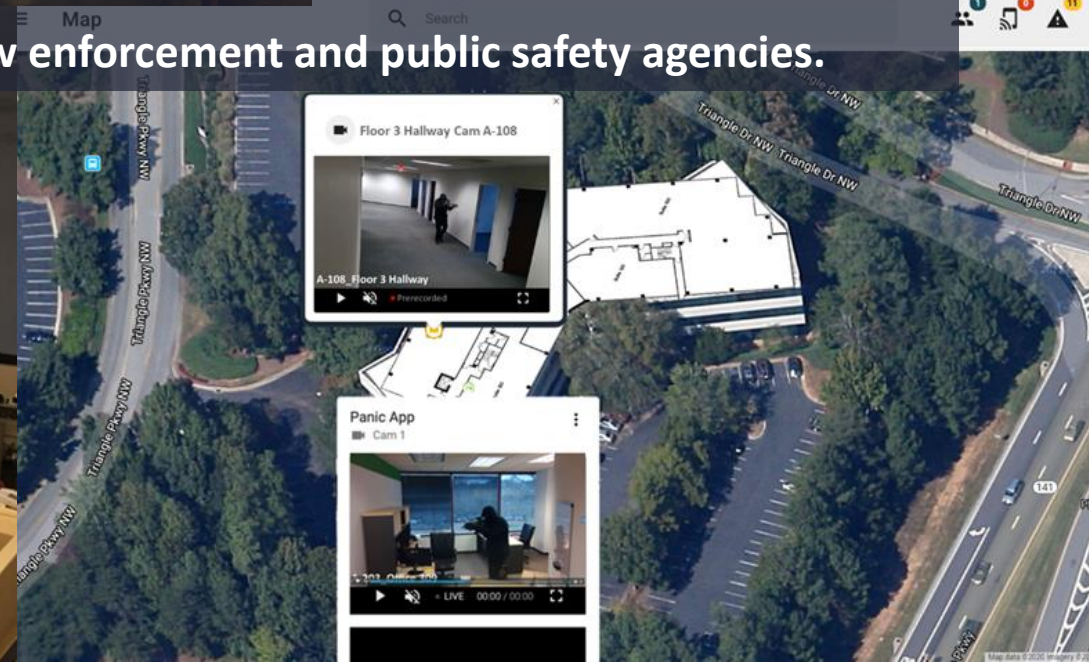
77



POWER A REAL-TIME CRIME CENTER IN THE CLOUD.

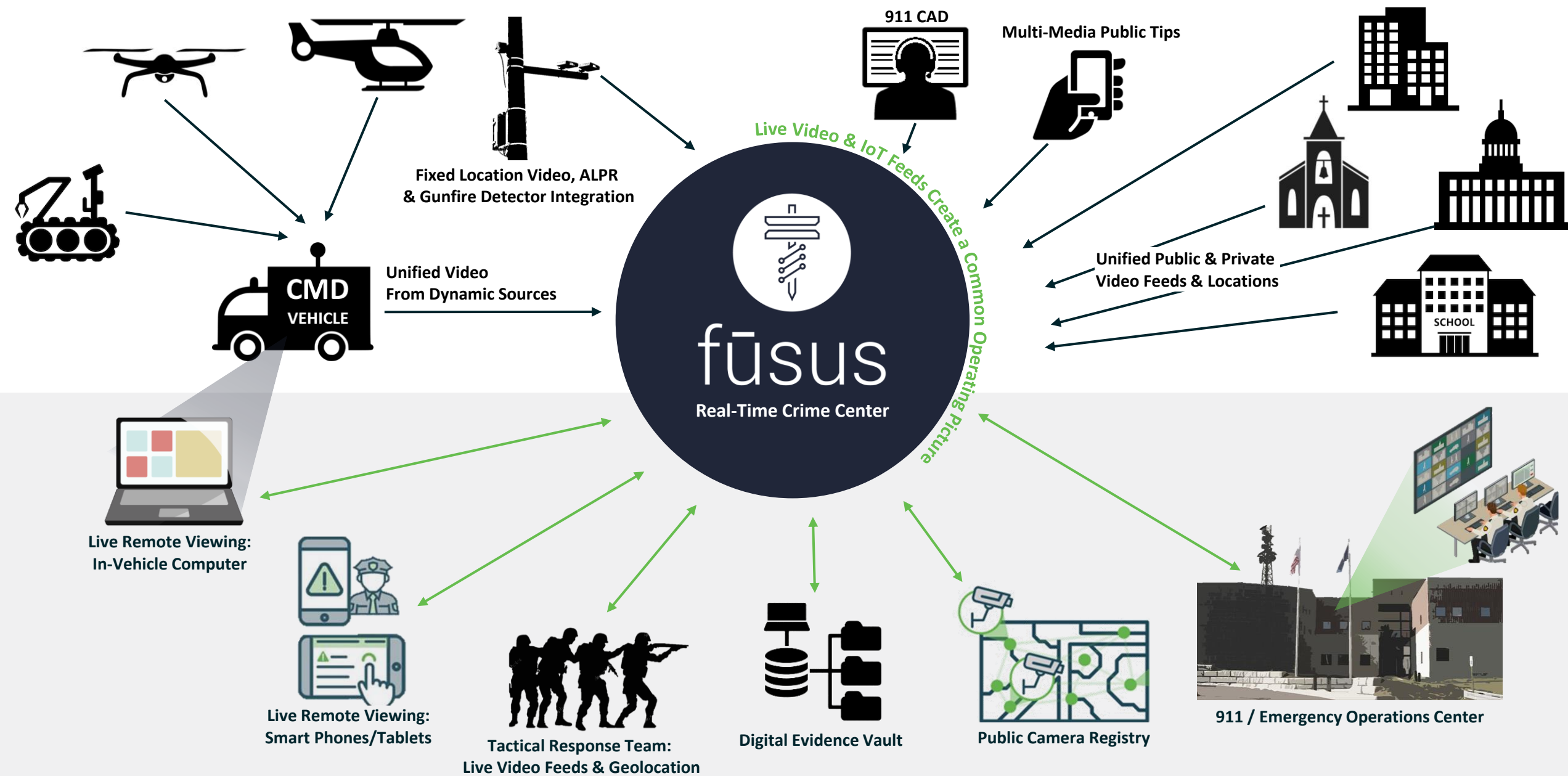


fūsus extracts and unifies live video and data feeds from virtually any source, creating a central hub that enhances the situational awareness and investigative capabilities of law enforcement and public safety agencies.





THE FŪSUS PUBLIC SAFETY ECOSYSTEM BRINGS IT ALL TOGETHER.





FŪSUS COVERS THE FULL-SPECTRUM OF SMART POLICING.

Fūsus creates a central hub that enhances the situational awareness and investigative capabilities of law enforcement and public safety agencies. We streamline investigations & incident management by fusing CAD, video and data assets into a unified Real-Time Crime Center in the Cloud platform.

Real-Time Incident Management

Investigations



A map-based interface for real-time access to your CAD feed, video camera locations and live feeds, ShotSpotter triggered video activations, officer geolocations, floor plans, automatic license plate readers, and other data in a single unified interface.



The fūsusCORE device brings live video feeds from any fixed or mobile camera system into fūsusONE, and requires no additional hardware. Live video feeds can be continuous, or on-alert only.



A tracking and communications app for field-based personnel. Live geolocations can be accessed via fūsusONE, and users can send panic alerts, share video and pictures, and receive communications from the command center.



A map of all the public & private security cameras in your region accessible via fūsusONE. fūsus creates a custom branded camera registry portal & marketing package for each community.



Members of the public can share tips, including recorded video & pictures via an easy to use text-in number. Tips are automatically logged into fūsusVAULT and can be correlated with other collected evidence.



fūsusVAULT streamlines investigations with a cloud-based digital evidence vault for the secure collection of recorded incident video and data, including public tips.



LEARN MORE ABOUT US.

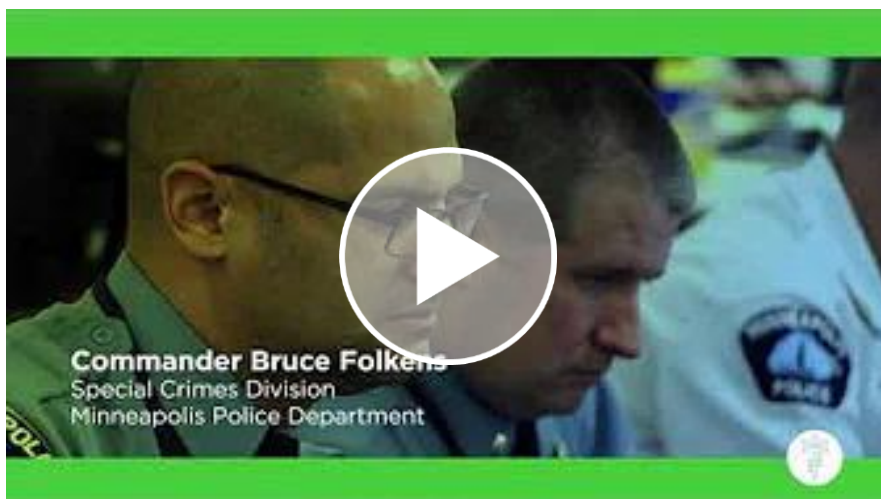
(Click on videos to view)



FŪSUS IN 30 SECONDS (30 SECS)



FŪSUS OVERVIEW (2 MINS 30 SECS)



HEAR IT FROM THE EXPERTS (1 MIN 25 SECS)



FŪSUS ONE SQUAD CAR DEMO (41 SECS)



“This is a big initiative! It’ll allow our police and first responders to look at the cameras in the schools...if there is an incident we can see where they are located in the school, we can see what the response is, we can watch our guys, we can see if the bad guy gets away, we can see if people are injured. What difference this makes for first responders is incredible, because the single factor working against you when responding to injuries like this is time. Most individuals bleed to death when they are shot- the quicker we can find them, the better. This is safer for our first responders, safer for our kids, and safer for our community. I want to applaud all our schools for getting involved in this, and especially our police department for doing this. It’s really awesome, and I’m very excited about this!”

**Dr. Sandra Bury, Mayor
Oak Lawn, IL**



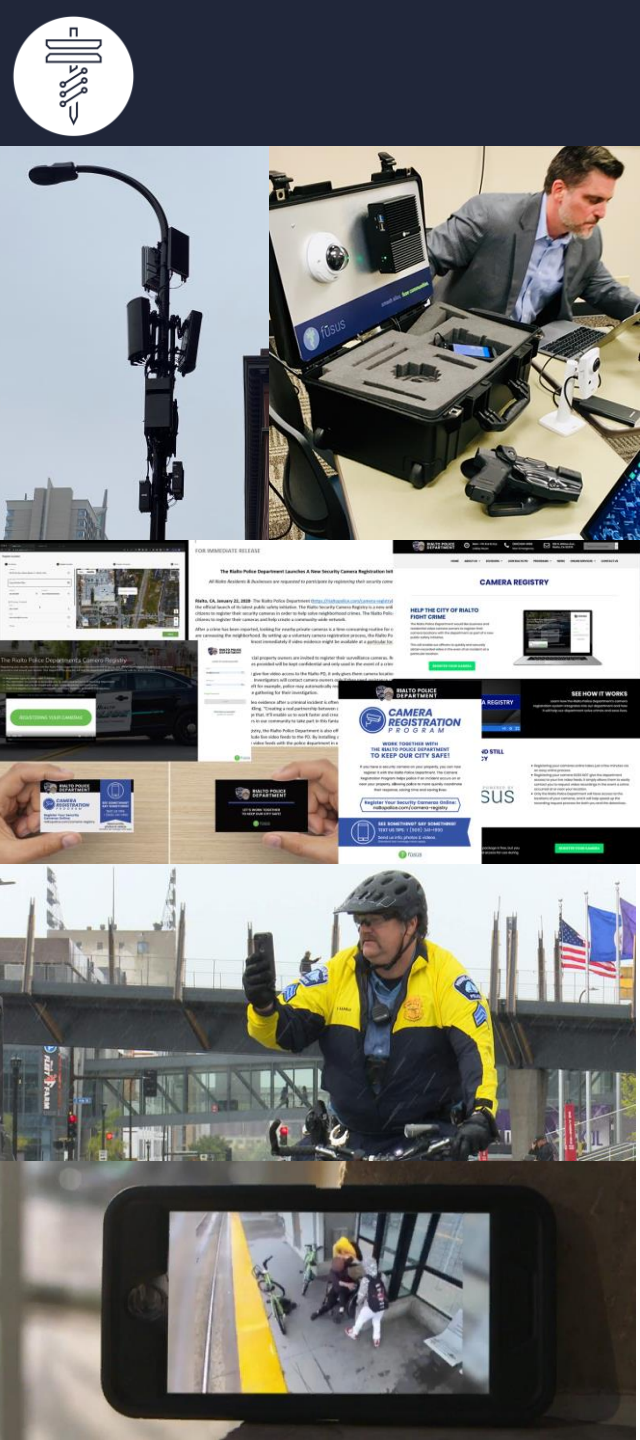
“Fusus is a game changer for our Department. The solution allows us to work closely with the community to speed investigations and provides us real-time access to video for emergency response. There are a lot of video solutions on the market, but we found Fusus to be the best solution for first responders and well positioned to support our real time intelligence gathering capabilities as they evolve over time.”

**Captain Anthony Vega, Support Services Division Commander
Rialto Police Department**



“We have cameras everywhere that we can see real-time what’s going on in all the events. That really helps monitor those events and make sure they are safe. We can electronically take the roof off the stadium and see where all the officers who are going to working Super Bowl Sunday are at. If there’s a crowd control problem, the officer can literally live-stream what they are seeing to the command post here, so we can see what they are seeing inside the stadium when it’s happening. It’s phenomenal technology.”

**Commander Bruce Folkens, Special Crimes Division
Minneapolis Police Department**



Collaborative fūsus will create a truly collaborative public-private security network, breaking down silos and defragmenting public and private video security networks in your region. It's an open platform that plugs right into a strategic information center, a 911 center, a squad car or a mobile device. Our platform unifies security camera feeds from city cameras, transit cameras, and privately owned cameras like those at a 7-11, a school, a church or an office building, enabling your police department to build closer ties to the communities you serve, and residents to play a role in crime reduction initiatives.

Open The future of smart policing does not have to take months or cost millions. Our platform is fast & easy to deploy, using existing hardware. Unlike a lot of other closed-loop video networking solutions, the fūsus solution is easy to deploy widely using existing video and security infrastructure- it does not require an expensive hardware overhaul in order to function. Instead, the fūsus system will tie together all existing resources and make them accessible via a centralized, cloud-based interface. Our platform seamlessly ties together disparate video hardware and software systems, including existing DVR/NVR equipment, and smoothly integrates with Emergency/First Responder dispatch and intelligence systems including CAD integration, ShotSpotter integration, first-responder geolocation, etc.

Proven Our technology will replicate success from city to city. The fūsus platform and program are configurable to meet the individual needs of any city or police department, but each installation is based on a successful model that can be replicated. Each police department doesn't have to start from the ground-up with fūsus- they can see how easy the installation has been in a different city, how the system is being successfully utilized, and then replicate that model of success. fūsus has been proven to work in American cities and towns of varying sizes, as well as at major events like the Super Bowl, the X-Games, and the PGA Tour, so our clients know that the technology they are implementing is field-tested, proven, and secure.

Seamless The fūsus team will ensure your program and platform is deployed smoothly, and we will support your community outreach efforts. Our technical support does not end after installation- we continue to work collaboratively with our clients to ensure their continued success. Plus, as a cloud-based platform fūsus will always be up-to-date with the latest technology, with software updates being pushed on a regular basis. It's a scalable solution that can grow and scale with a police department or city, bringing on more and more data feeds and residents at a reasonable cost.



Get More Out Of Your Gunshot Detection System With Live Video

February 27, 2020 by Sahil Merchant

The main problem with gunfire detection systems like ShotSpotter, is that they give law enforcement only half the picture- it tells them the location of a crime in progress, but no details about what is going on, or to who. By integrating live video into a gunshot detection system, law enforcement can gain immediate insight into crimes in progress.

[READ MORE](#)



When Delays Are Deadly: Using Live Video To Limit Fatalities In School & Workplace Shootings

July 29, 2019 by Sahil Merchant

Many gunshot victims do not die from their primary injury- instead, they tend to bleed out, even from initially non-fatal wounds. In these cases, minutes can make the difference between life and death. So how can we get people to safety faster? The keys to a rapid and effective first-response in the case of an active shooter is complete situational awareness, coupled with a common operating picture.

[READ MORE](#)



The Top 5 Reasons fūsus is the Best Video Networking Solution for Law Enforcement Agencies

October 18, 2019 by Sahil Merchant

When we're meeting with officers and officials from police departments and public safety organizations, we inevitably come to the question- "Why should we use your video surveillance platform over some of the other options out there?" It's a great question that gets to the heart of why we built our technology in the first place- what makes fūsus different from other video security products on the market? To break it down succinctly, here are the top 5 reasons why fūsus is probably the best fit for your police department or public safety agency's needs.

[READ MORE](#)



8 Law Enforcement Tech Trends to Watch Out For in 2020

October 28, 2019 by Sahil Merchant

As we enter the final months of 2019, it's time to begin planning and budgeting for new police department and public safety initiatives for 2020. Here's a look at 8 of the most compelling technology trends we see on the horizon, that will shape public policy and law enforcement organizations in the coming year.

[READ MORE](#)



fūsus

+1 (844) 226-9226

info@fusus.com

www.fusus.com

UNIFY YOUR PUBLIC SAFETY ECOSYSTEM WITH RTC³